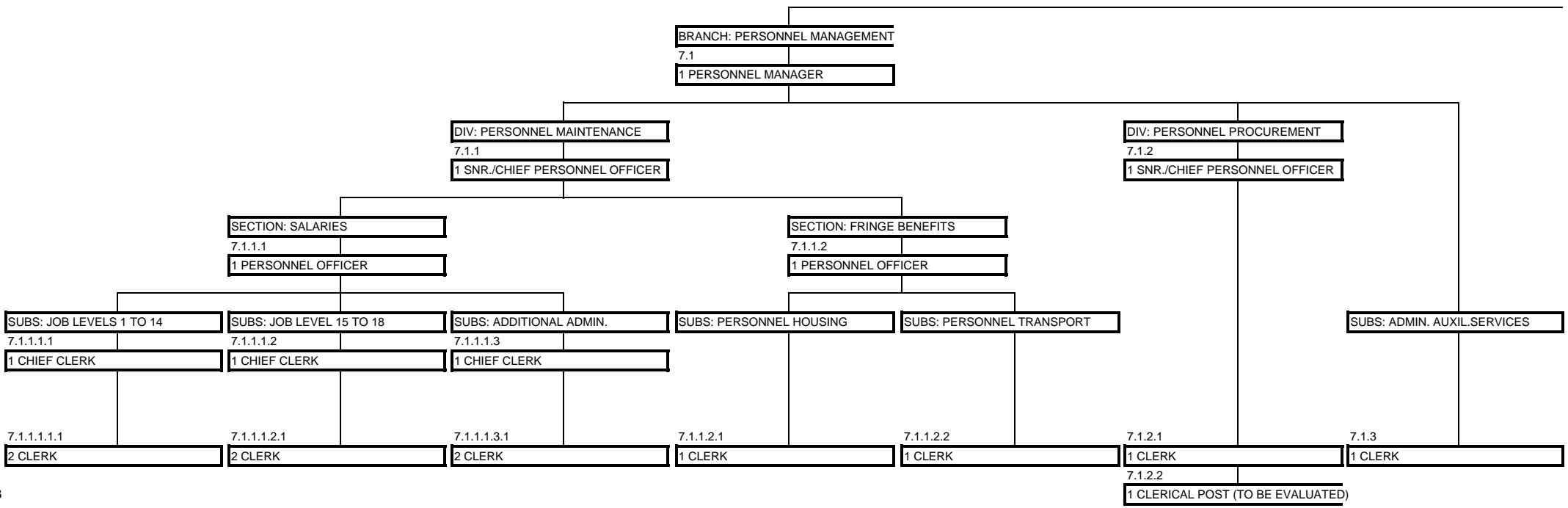


1  
2  
3  
5/4  
7/6  
8  
10/9  
12/11  
14/13  
15  
18/16



1  
2  
3  
5/4  
7/6  
8  
10/9  
12/11  
14/13  
15  
18/16

1  
2  
3  
5/4  
7/6  
8  
10/9  
12/11  
14/13  
15  
18/16

MUNICIPAL MANAGER

DEPT: HUMAN RESOURCES

7  
1 EXEC.MNGR. HUMAN RESOURCES

----- Secretary

BRANCH: LABOUR RELATIONS

7.2

1 LABOUR RELATIONS MANAGER

BRANCH: SKILLS DEVELOPMENT

7.3

1 MANAGER SKILLS DEVELOPMENT

DIV: GROSS MISCONDUCT

7.2.1

1 SNR./CHIEF LABOUR REL.OFFICER

DIV: ABET/MNGMNT-/SUPERV.TRAINING

7.3.1

1 SNR./CHIEF TRAINING OFFICER

DIV: ON THE JOB/VOCATIONAL/COMMUN

7.3.2

1 SNR./CHIEF TRAINING OFFICER

SECT: DEPARTMENTAL CASES

7.2.3

1 LABOUR RELATIONS OFFICER

SECTION: ABET

7.3.1.1

1 TRAINING OFFICER

SECTION: SUPERVISORY TRAINING

7.3.1.2

1 TRAINING OFFICER

SECTION: ON THE JOB/VOCAT.TR.

7.3.2.1

1 TRAINING OFFICER

SECTION: COMMUNITY

7.3.2.2

1 TRAINING OFFICER

SUBS: AUXILIARY SERVICES

7.2.2

2 ASST.LABOUR RELATIONS OFFICER

7.3.1.1.1

3 ABET FACILITATOR

7.2.2.1

1 TYPIST/CLERK

