

DEPT: FINANCIAL SERVICES
PROPOSED MAY 2002
APPROVED

1

2

3

5/4

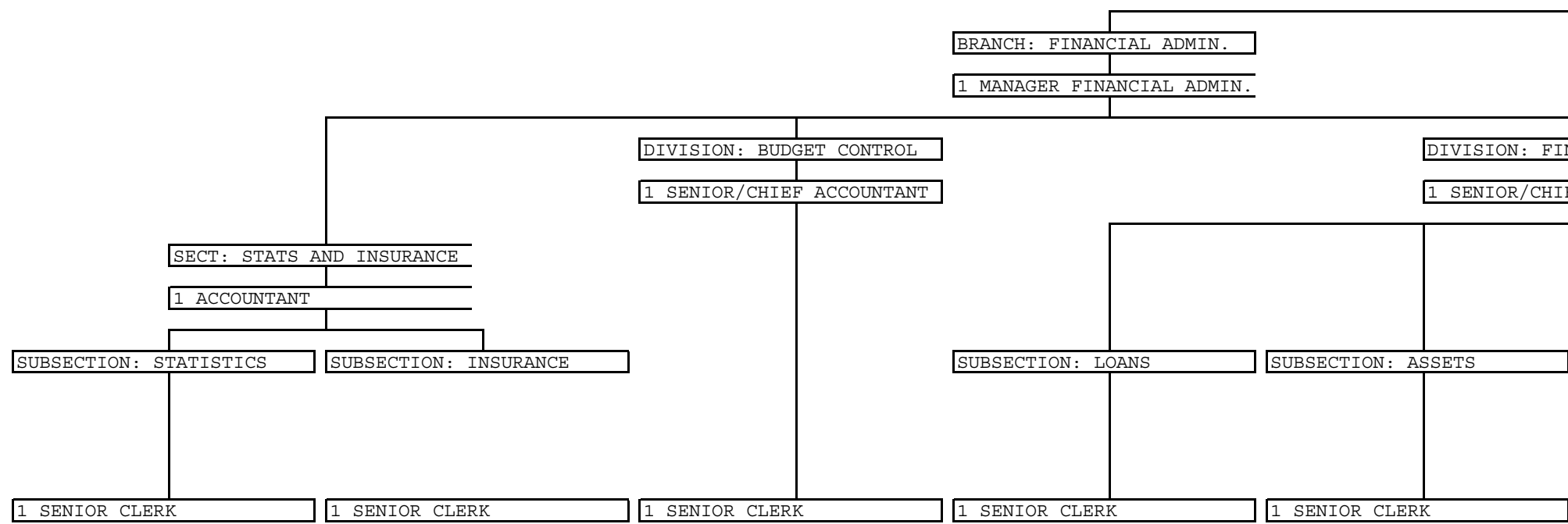
7/6

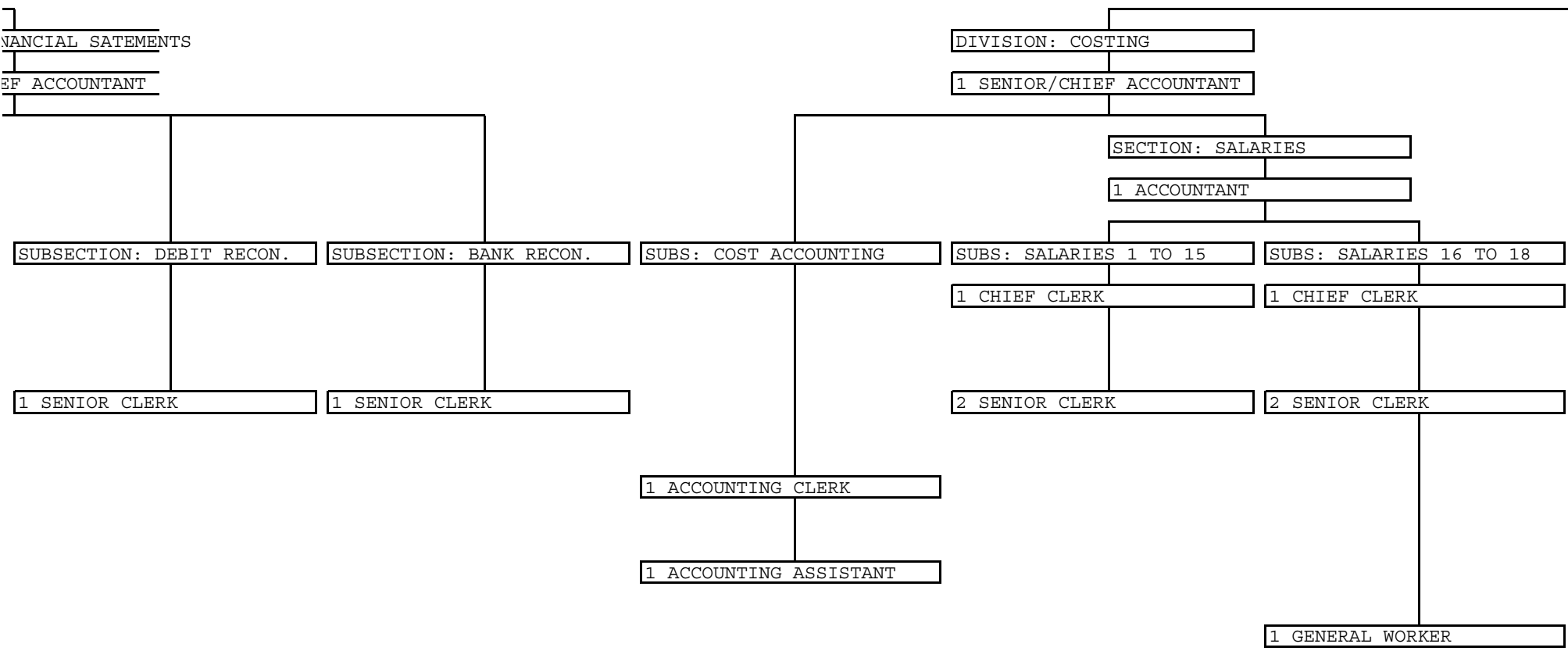
8

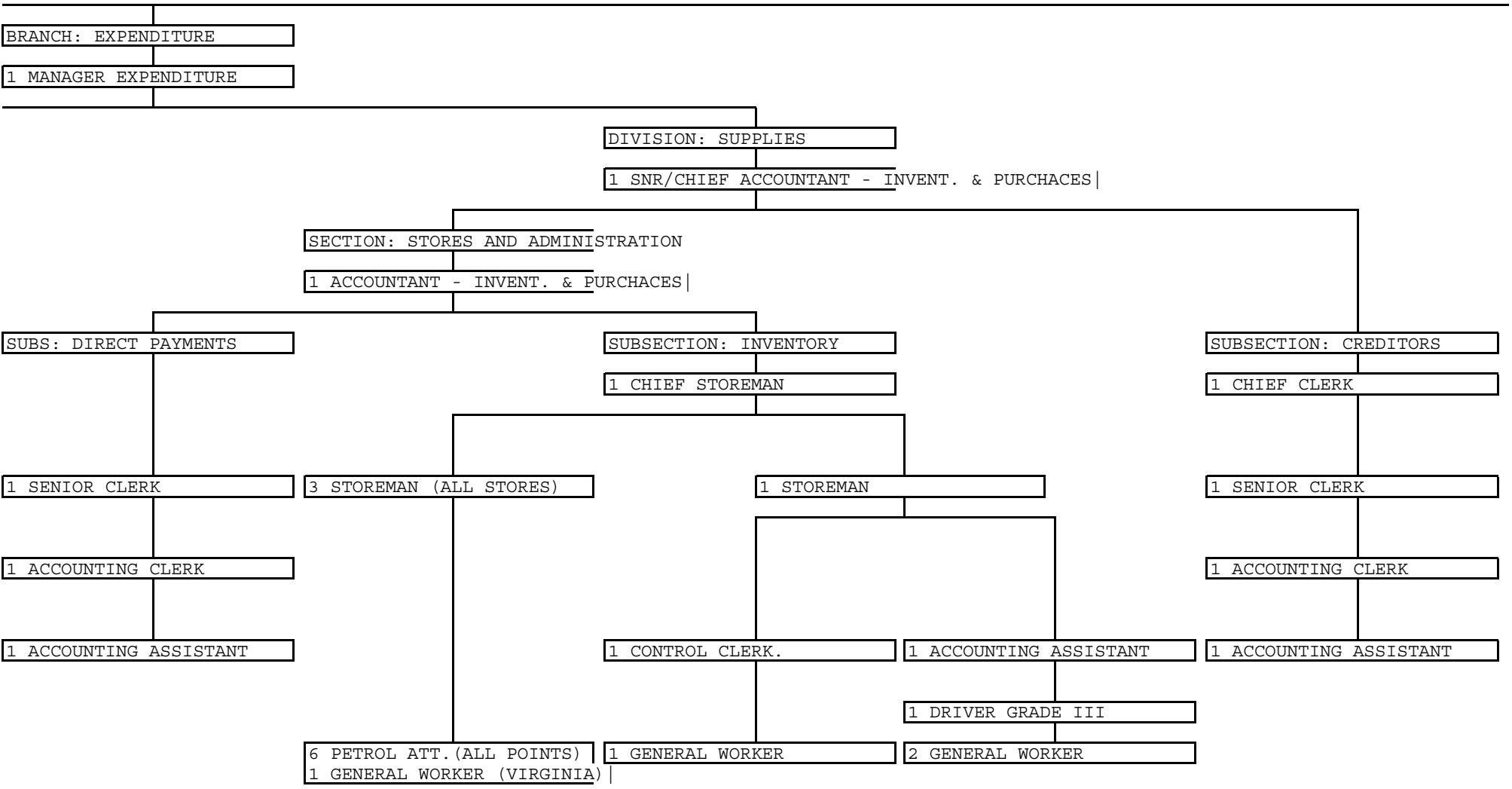
10/9

12/11

14/13







BRANCH: EXPENDITURE

1 MANAGER EXPENDITURE

DIVISION: SUPPLIES

1 SNR/CHIEF ACCOUNTANT - INVENT. & PURCHACES

SECTION: STORES AND ADMINISTRATION

1 ACCOUNTANT - INVENT. & PURCHACES

SUBS: DIRECT PAYMENTS

SUBSECTION: INVENTORY

SUBSECTION: CREDITORS

1 SENIOR CLERK

3 STOREMAN (ALL STORES)

1 STOREMAN

1 SENIOR CLERK

1 ACCOUNTING CLERK

1 ACCOUNTING CLERK

1 ACCOUNTING ASSISTANT

1 CONTROL CLERK.

1 ACCOUNTING ASSISTANT

1 ACCOUNTING ASSISTANT

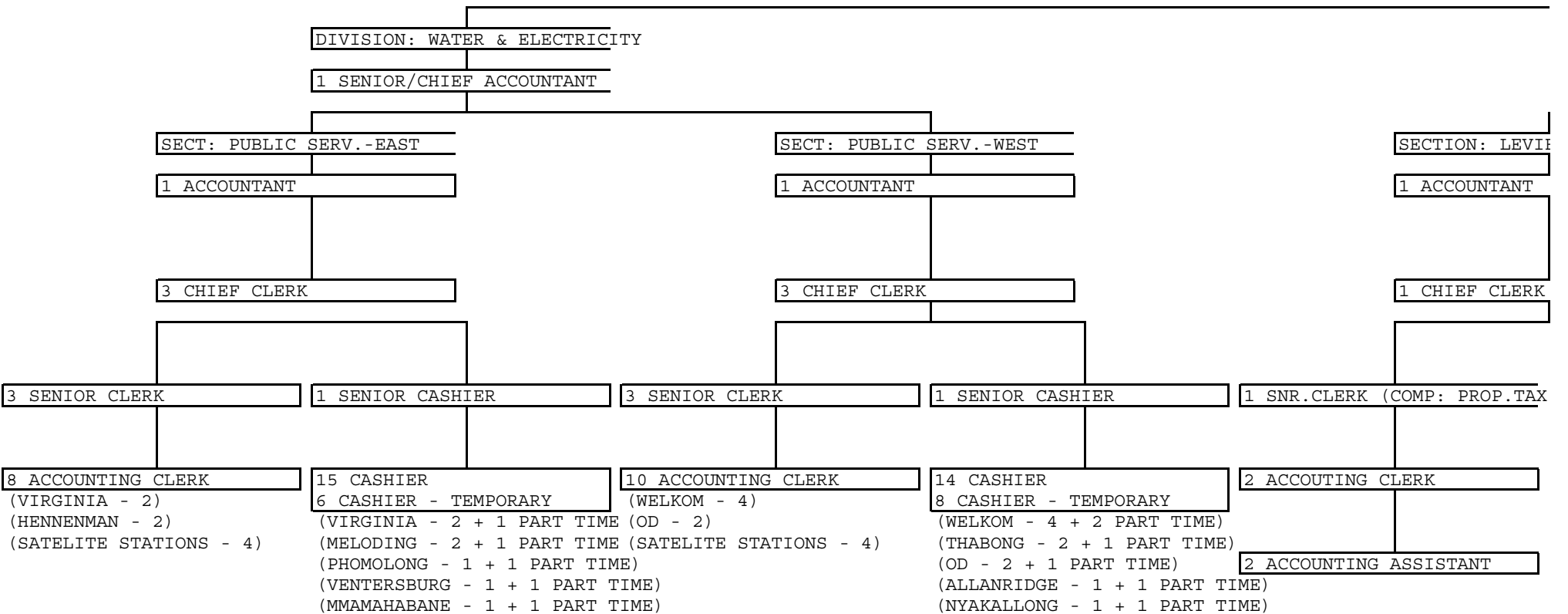
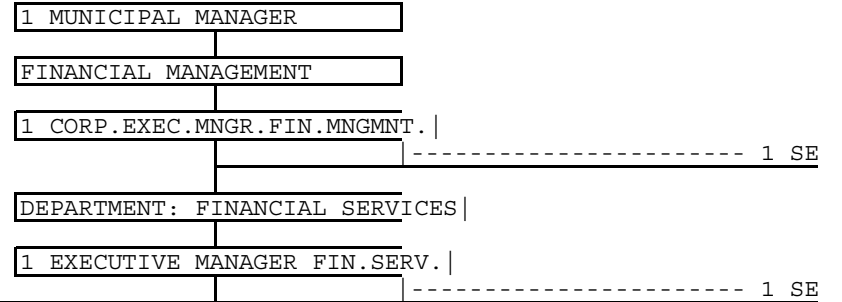
1 DRIVER GRADE III

6 PETROL ATT. (ALL POINTS)

1 GENERAL WORKER (VIRGINIA)

1 GENERAL WORKER

2 GENERAL WORKER



SECRETARY

SENIOR CLERK

BRANCH: REVENUE

1 MANAGER REVENUE

DIVISION: DEBITS

1 SENIOR/CHIEF ACCOUNTANT

DEBITS AND SERVICE ACCOUNTS

SUBSECT: SUNDRY DEBTORS

1 CHIEF CLERK

3 SNR. CLERK (COMP: CONSUMER)

1 SENIOR CLERK

6 ACCOUNTING CLERK

3 ACCOUNTING CLERK

4 ACCOUNTING ASSISTANT

3 ACCOUNTING ASSISTANT

DIVISION: COLLECTIONS

1 SENIOR/CHIEF ACCOUNTANT

SECT: LEGAL AND ADMIN.AUXILIARY SERVICES

1 ACCOUNTANT

SUBS: ADMIN.AUX.SERVICES

1 TYPIST

SUBSECTION: LEGAL ACTIONS

1 SENIOR CLERK

2 ACCOUNTING CLERK

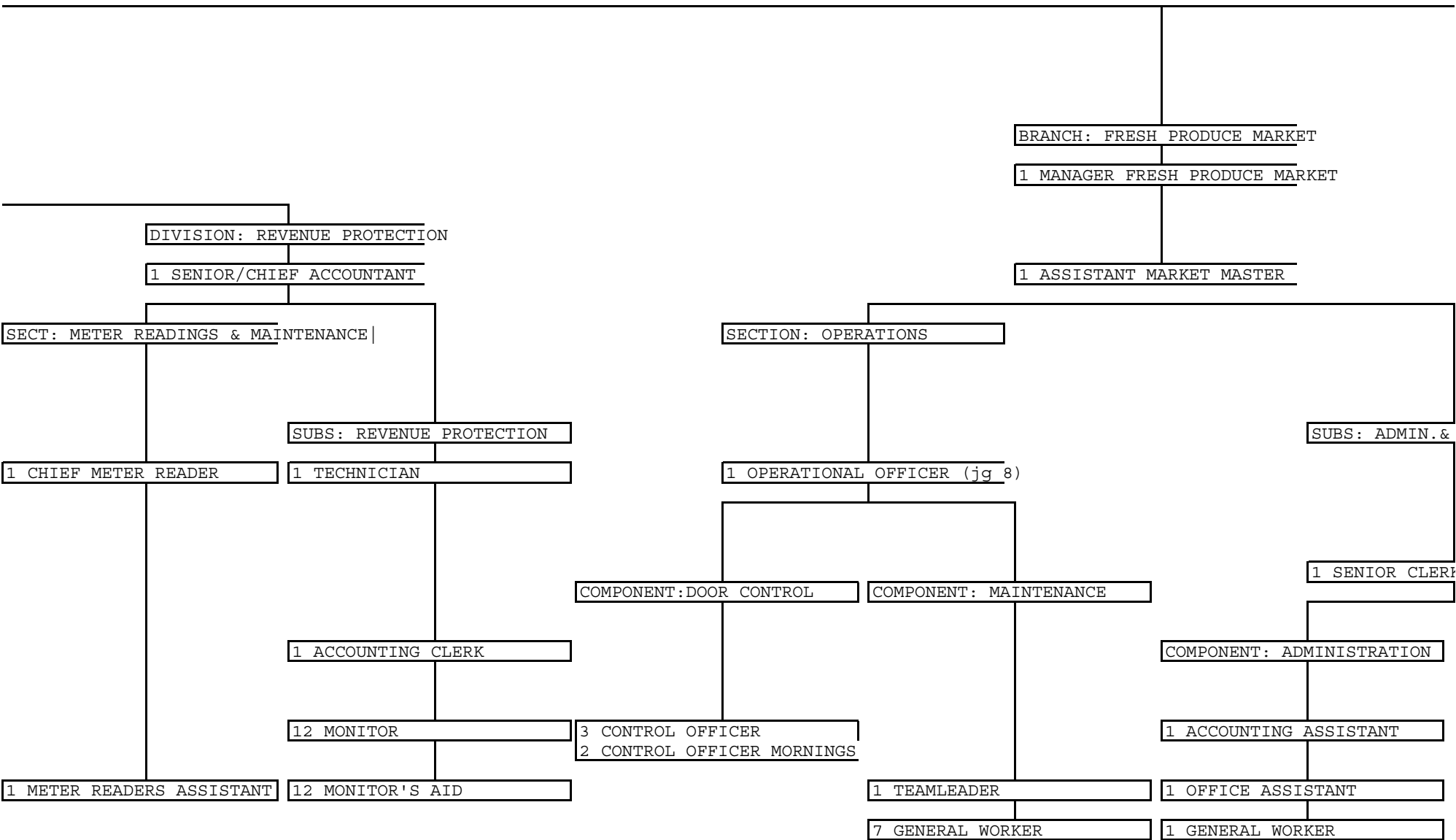
5 ACCOUNTING ASSISTANT

SECT: ARRANGEM.& CUT-OFFS

1 ACCOUNTANT

4 SENIOR CLERK

6 ACCOUNTING CLERK



DIVISION: REVENUE PROTECTION

1 SENIOR/CHIEF ACCOUNTANT

SECT: METER READINGS & MAINTENANCE

SUBS: REVENUE PROTECTION

1 CHIEF METER READER

1 TECHNICIAN

1 ACCOUNTING CLERK

12 MONITOR

1 METER READERS ASSISTANT

12 MONITOR'S AID

BRANCH: FRESH PRODUCE MARKET

1 MANAGER FRESH PRODUCE MARKET

1 ASSISTANT MARKET MASTER

SECTION: OPERATIONS

1 OPERATIONAL OFFICER (jg 8)

COMPONENT: DOOR CONTROL

COMPONENT: MAINTENANCE

3 CONTROL OFFICER

2 CONTROL OFFICER MORNINGS

1 TEAMLEADER

7 GENERAL WORKER

SUBS: ADMIN. &

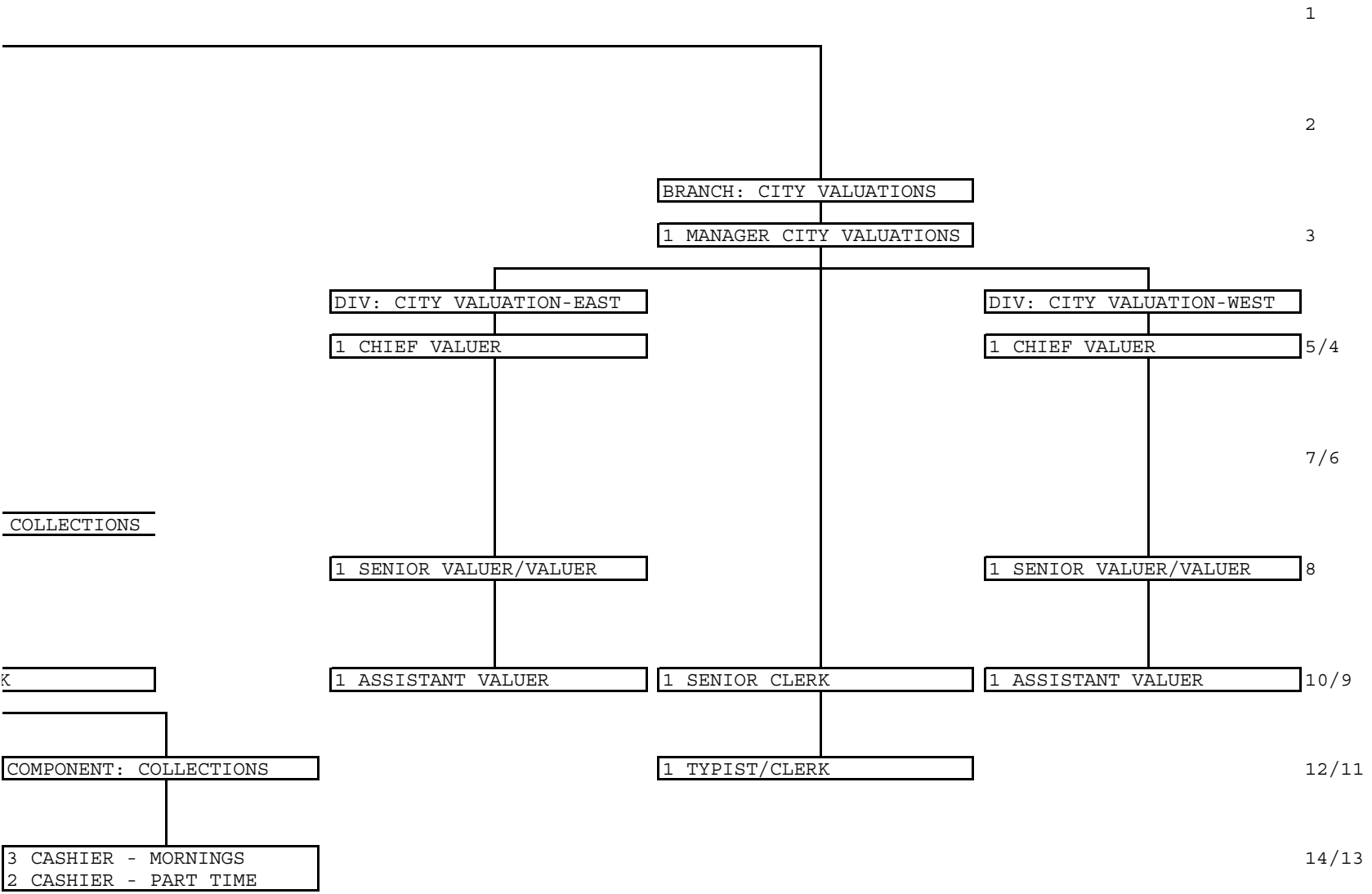
1 SENIOR CLERK

COMPONENT: ADMINISTRATION

1 ACCOUNTING ASSISTANT

1 OFFICE ASSISTANT

1 GENERAL WORKER



COLLECTIONS

K

COMPONENT: COLLECTIONS

3 CASHIER - MORNINGS
2 CASHIER - PART TIME