

1

2

3

5/4

7/6

8

9

10/9

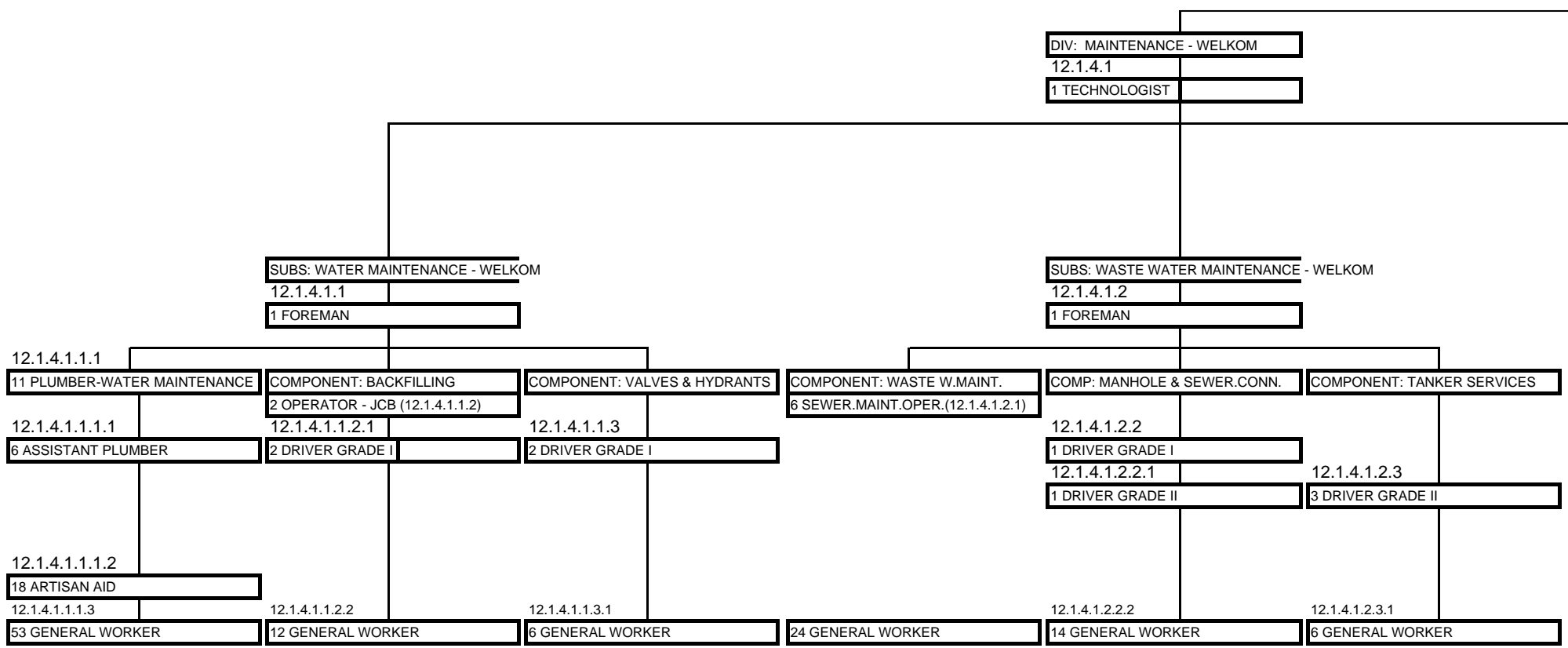
12/11

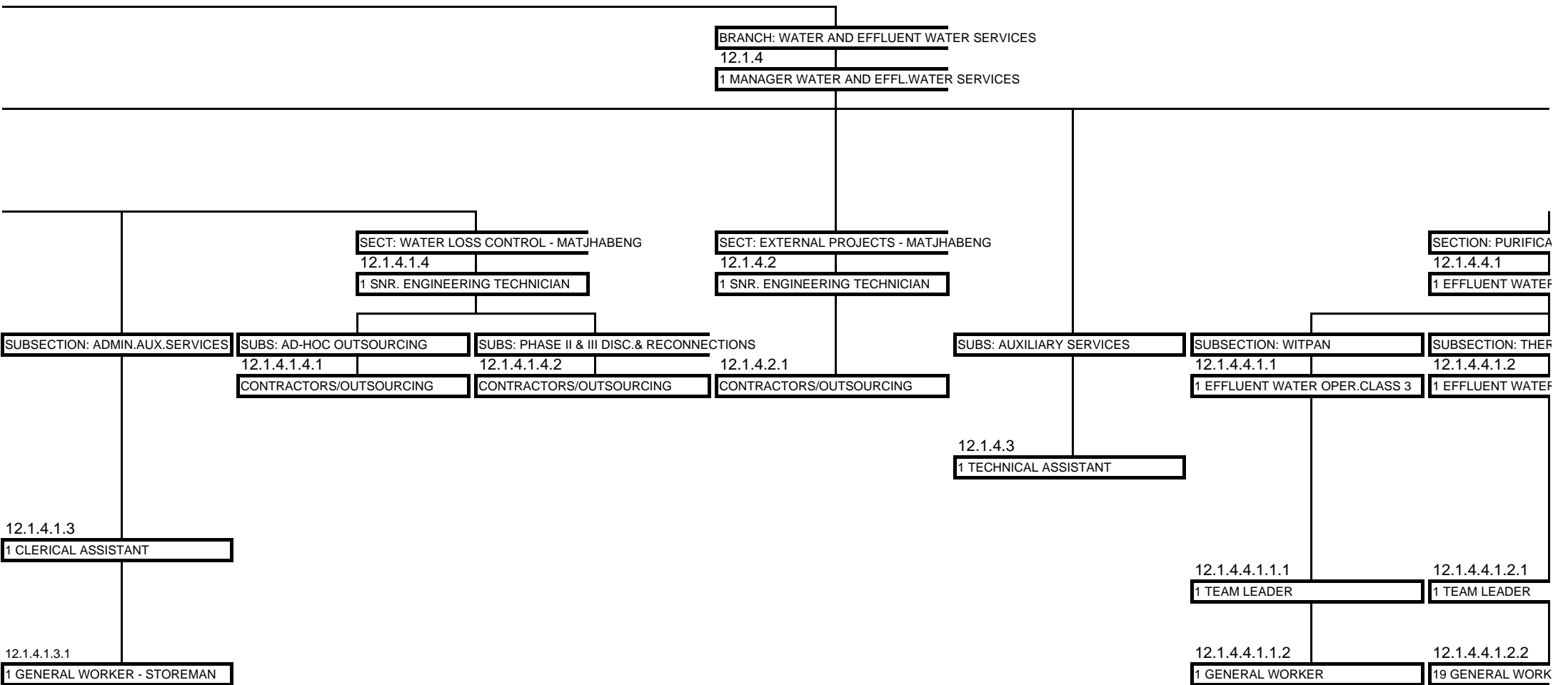
14/13

15

16/15

18/17





MUNICIPAL MANAGER

DEPT: ENGINEERING SERVICES

1 CORP.EXEC.MNGR. ENG.SERVICES

12.(a)

1 SECRETARY

DIV: PURIFICATION WORKS - MATJHABENG

1 TECHNOLOGIST (12.1.4.4)

PURIFICATION WORKS - WEST

1 EFFLUENT WATER OPER.CLASS 4

1 EFFLUENT WATER OPER.CLASS 3

1 EFFLUENT WATER OPER.CLASS 3

1 LABORATORY ASSISTANT

3 TEAM LEADER

21 GENERAL WORKER

SUBS: OD, KUTLWAN.& AL.RIDGE

12.1.4.4.1.3

1 EFFLUENT WATER OPER.CLASS 3

12.1.4.4.1.3.1

3 TEAM LEADER

12.1.4.4.1.3.2

21 GENERAL WORKER

SUBS: LABORATORY

12.1.4.4.2

1 TECHNICIAN

12.1.4.4.2.1

1 LABORATORY ASSISTANT

12.1.4.4.2.2

2 TECHNICAL AID

12.1.4.4.2.3

1 GENERAL WORKER

COMPONENT: PUMPSTATIONS

3 MILL WRIGHTS (12.1.4.4.3.1)

12.1.4.4.3.1.1

6 ARTISAN AID

12.1.4.4.3.1.2

20 GENERAL WORKER

SUBS: ELECT.& MECH.MAINTENANCE

12.1.4.4.3

1 FOREMAN

COMPONENT: SEWER.WORKS

12.1.4.4.3.2

1 EFFL. WATER OPER.CLASS 1

12.1.4.4.3.2.1

2 DRIVER GRADE II

12.1.4.4.3.2.2

2 TRACTOR DRIVER

SUBSECTION: VIRGINIA

12.1.4.4.4.1

1 EFFLUENT WATER OPER.CLASS 3

12.1.4.4.4.1.1

1 TEAM LEADER

12.1.4.4.4.1.2

8 GENERAL WORKER

SECTION: PURIFICATION WORKS - EAST

12.1.4.4.4

1 EFFLUENT WATER OPER.CLASS 4

SUBS: VB,MMAM,HMAN,WHTS,PHOM.

12.1.4.4.4.2

1 EFFLUENT WATER OPER.CLASS 3

12.1.4.4.4.2.1

5 TEAM LEADER

12.1.4.4.4.2.2

15 GENERAL WORKER

---

ST

