

COMMUNITY AND SOCIAL DEVELOPMENT |
DEPARTM: HEALTH SERVICES
PROPOSED JULY 2002
APPROVED

1

2

3

5/4

6

8/7

10/9

12/11

BRANCH: PERSONAL HEALTH SERVICES-EAST |

1 ASST. CHIEF PERSONAL HEALTH SERVICES |

DIVISION: NURSING SERVICES - A

DIVISION: NURSING SERVICES - B

1 CHIEF PROFESSIONAL NURSE

1 CHIEF PROFESSIONAL NURSE

SECTION: VIRGINIA

SECTION: MELODING

SECTION: HENNINGMAN

SECTION: PHOMOLONG

2 SNR PROF. NURSE

3 SNR PROF. NURSE

1 SNR PROF. NURSE

1 SNR PROF. NURSE

5 PROFESSIONAL NURSE

10 PROFESSIONAL NURSE

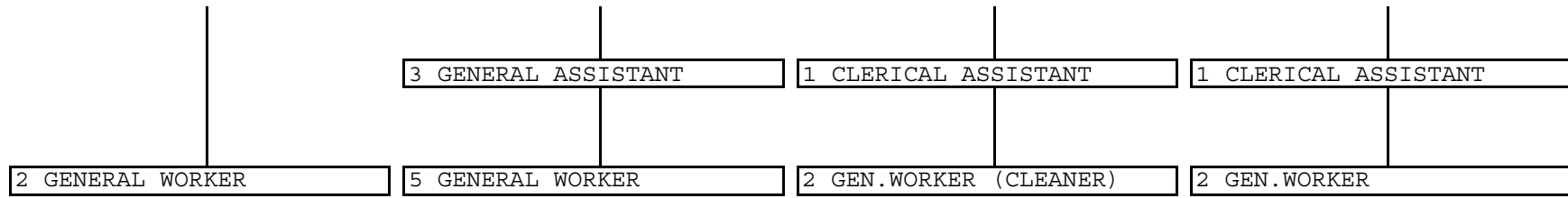
1 PROFESSIONAL NURSE

4 PROFESSIONAL NURSE

2 CLERK

1 ENROLLED NURSE

14/13



DEPARTMENT: HEALTH SERVICES

1 EXECUTIVE MANAGER HEALTH SERVICES

--- -----

NURSING SERVICES - B

PROFESSIONAL NURSE

SECT: NURSING SERVICES - C

1 SENIOR PROFESSIONAL NURSE

SUBSECTION: VENTERSBURG

SUBSECTION: MMAMAHABANE

3 PROFESSIONAL NURSE

3 PROFESSIONAL NURSE

2 ENROLLED NURSE

DIVISION: NURSING SERVICES - A

1 CHIEF PROFESSIONAL NURSE

SECTION: WELKOM CLINIC

SECTION: RIEBEECKSTAD

SECTION: BROMELAND

2 SNR. PROFESSIONAL NURSE

1 SNR. PROFESSIONAL NURSE

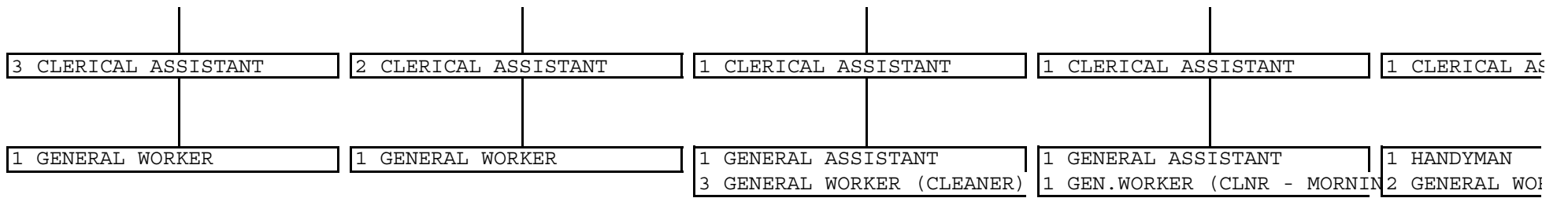
1 SNR. PROFESSIONAL NURSE

12 PROFESSIONAL NURSE

3 PROFESSIONAL NURSE

5 PROFESSIONAL NURSE

1 ENROLLED NURSE



----- 1 SENIOR CLERK

BRANCH: PERSONAL HEALTH SERVICES-WEST |

1 ASST. CHIEF PERSONAL HEALTH SERVICES |

DIVISION: NURSING SERVICES - B

1 CHIEF PROFESSIONAL NURSE

DIVISION: NURSING SERVICES

1 CHIEF PROFESSIONAL NURSE

SECTION: THABONG SECTION: BOPHELONG SECTION: KHOTSONG SECTION: TSHEPANE

2 SNR. PROFESSIONAL NURSE 1 SNR. PROFESSIONAL NURSE 1 SNR. PROFESSIONAL NURSE 1 SNR. PROFESSIONAL NURSE

14 PROFESSIONAL NURSE 4 PROFESSIONAL NURSE 6 PROFESSIONAL NURSE 4 PROFESSIONAL NURSE

1 CLERK
5 ENROLLED NURSE 1 ENROLLED NURSE 2 ENROLLED NURSE 2 ENROLLED NURSE

SSISTANT	3 CLERICAL ASSISTANT 1 AUXILIARY NURSE	1 CLERICAL ASSISTANT 2 AUXILIARY NURSE	2 CLERICAL ASSISTANT 2 AUXILIARY NURSE	1 CLERICAL ASS 1 AUXILIARY NU
	1 DRIVER GR III 3 GENERAL ASSISTANT	3 GENERAL ASSISTANT	3 GENERAL ASSISTANT	3 GENERAL ASSI
RKER (CLEANER)	1 HANDYMAN 5 GENERAL WORKER (CLEANER)	2 GENERAL WORKER (CLEANER)	1 HANDYMAN 4 GENERAL WORKER (CLEANER)	2 GENERAL WOR

- C

DIVISION: NURSING SERVICES - D

1 CHIEF PROFESSIONAL NURSE (CH.PR.NURSE - jg ?)

PONG
SIONAL NURSE

SECTION: ODENDAALSRUS
1 SENIOR PROFESSIONAL NURSE

SECTION: KHUTLWANONG
3 SNR.PROFESSIONAL NURSE

SECTION: NURSING SERVICES - F
4 SNR.PROFESSIONAL NURSE

L NURSE

5 PROFESSIONAL NURSE

15 PROFESSIONAL NURSE

SUBSECTION: ALLANRIDGE
2 PROFESSIONAL NURSE

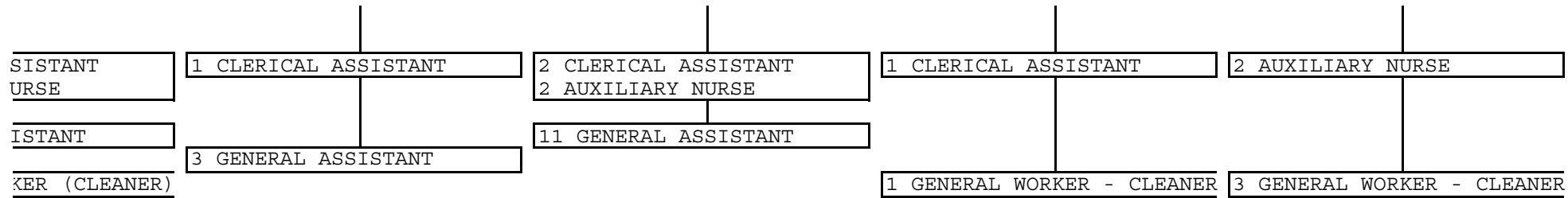
SUBSECTION: NYAKALLONG
3 PROFESSIONAL NURSE

RSE

4 ENROLLED NURSE

1 ENROLLED NURSE

1 ENROLLED NURSE



COMMUNITY AND SOCIAL DEVELOPMENT
BRANCH: SOCIAL DEVELOPMENT
PROPOSED: JUNE 2002
APPROVED:

MUNICIPAL MANGER

DEPARTMENT: COMMUNITY AND SOCIAL DEVELOPMENT

1 CORPORATE EXECUTIVE MANAGER COMMUNITY & SOCIAL DEV.

----- 1 SECRETARY

BRANCH: SOCIAL & COMMUNITY :

1 MANAGER SOCIAL & COMMUNIT

DIV: SOCIAL & COMMUNITY SERVICES

1 SENIOR SOCIAL WORKER

SUBSECTION: EAST

1 SOCIAL WORKER

SUBSECTION: VIRGINIA

SUBSECTION: HENNINGMAN

SUBSECTION: VENTERSBURG

SUBSECTION: WELKOM

1 ASSIST. WELFARE OFFICER

1 ASSIST. WELFARE OFFICER

1 ASSIST. WELFARE OFFICER

1 ASSIST. WELFARE OFFICER

2 CLERICAL ASSISTANT

2 CLERICAL ASSISTANT

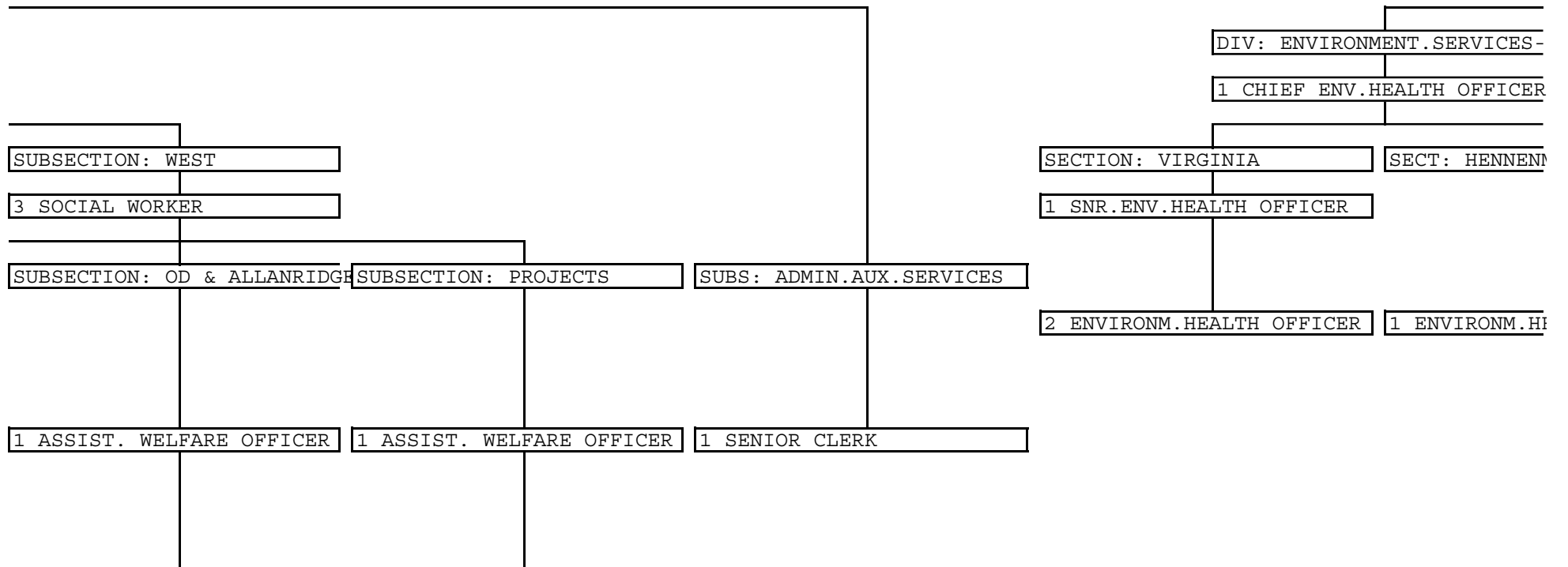
2 CLERICAL ASSISTANT

2 CLERICAL ASSISTANT

DEPT: COMMUNITY & SOCIAL DEV.
 BRANCH: ENVIRONMENTAL CARE
 PROPOSED JULY 2002
 APPROVED

DEVELOPMENT |

RY DEVELOPMENT |



2 CLERICAL ASSISTANT

2 CLERICAL ASSISTANT

-EAST

DIV: CLEANSING SERV-EAST

1 CHIEF ENV.HEALTH OFFICER

MAN & VENTERSBURG SECTION: CLEANSING

1 CLEANSING OFFICER

SUBS: REF.DISPOS.SITE-EAST SUBS: ADM.AUX.

HEALTH OFFICER COMP: REFUSE REMOVAL-VIRGINIA

COMP:REF.REM.- HENN.& VENTERSBURG

1 ASST.CLEANSING OFFICER

2 ASST.CLEANSING OFFICER

2 OPERATOR

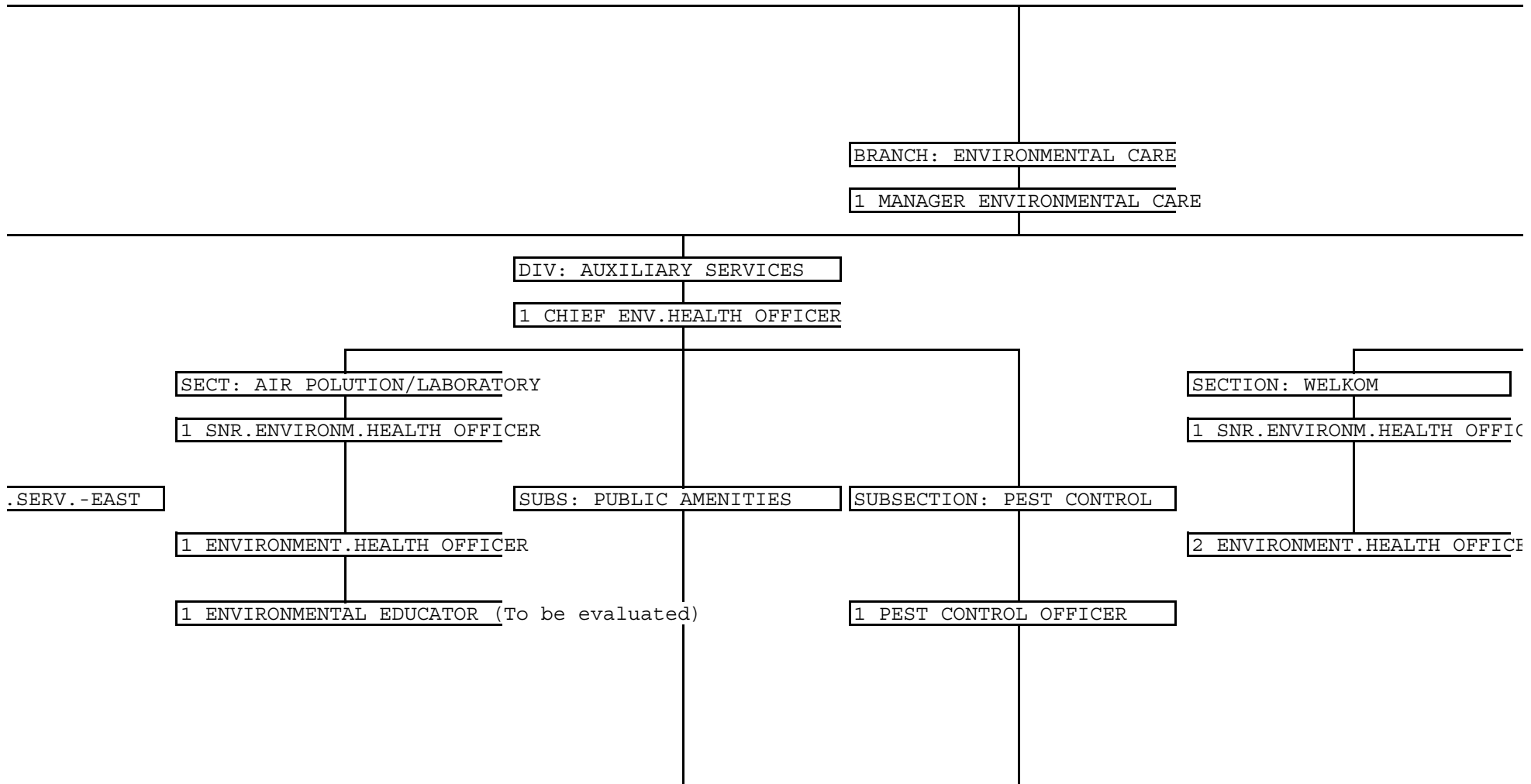
4 DRIVER GRADE I

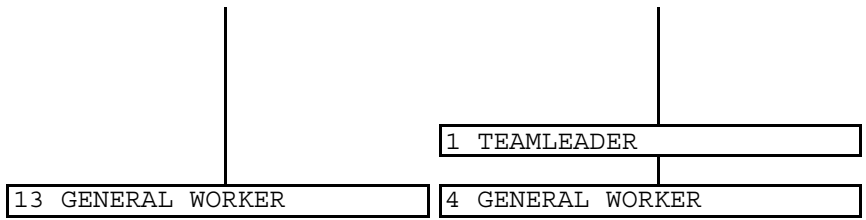
6 DRIVER GRADE I

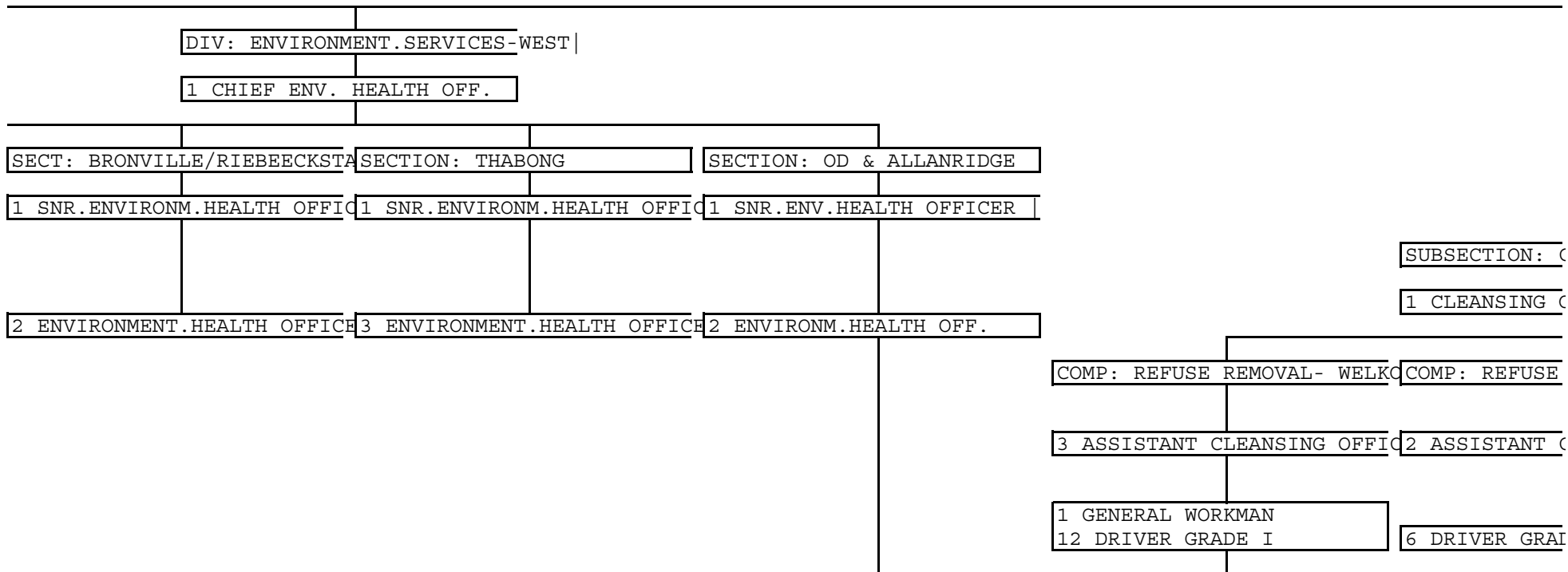
10 GENERAL WORKER
57 GENERAL WORKER

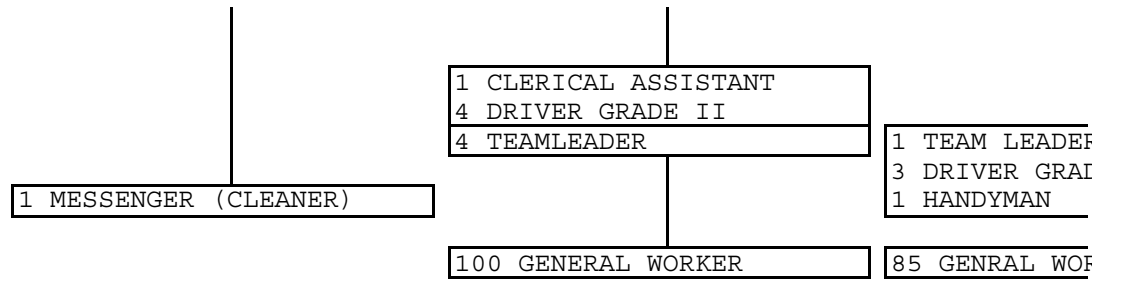
64 GENERAL WORKER

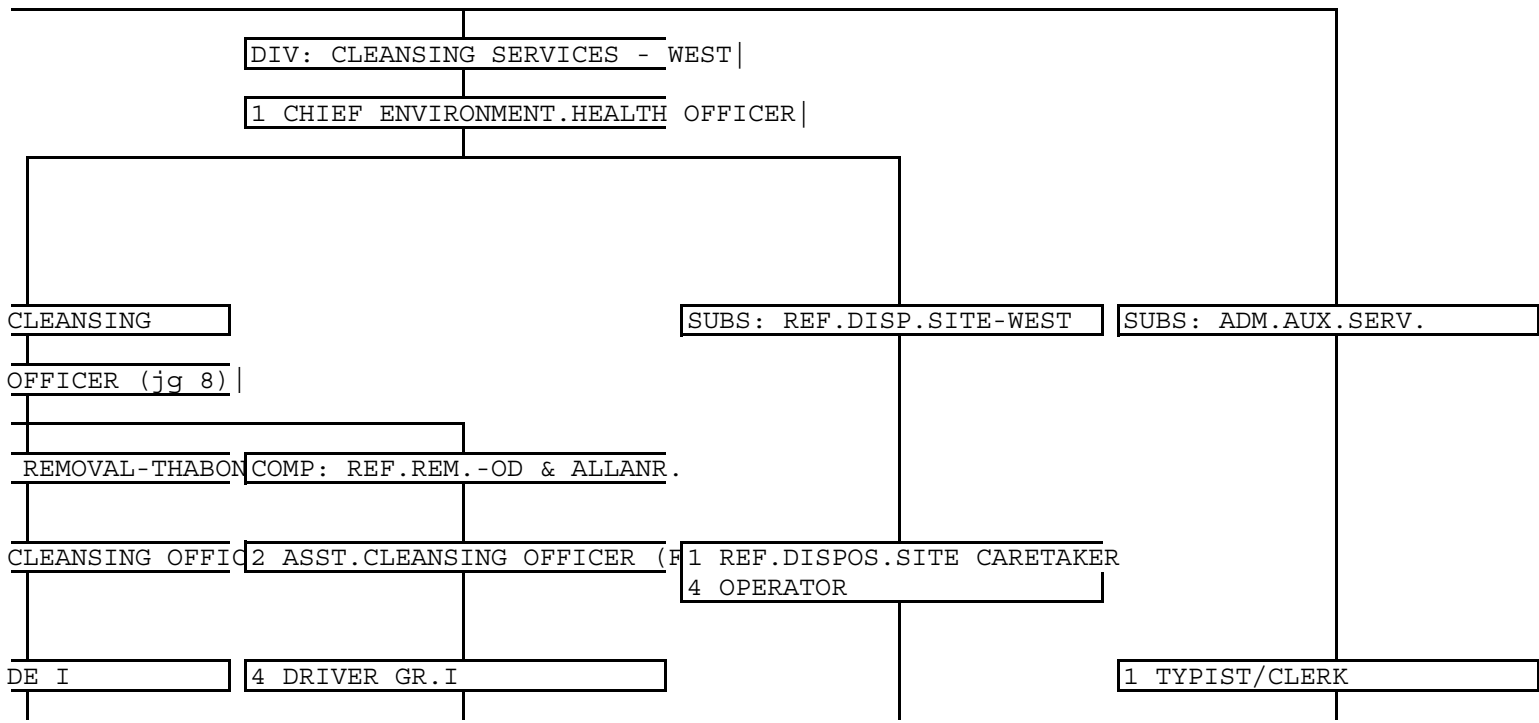
2 GENERAL WORKER











DIV: CLEANSING SERVICES - WEST |

1 CHIEF ENVIRONMENT.HEALTH OFFICER |

CLEANSING
OFFICER (jg 8) |

SUBS: REF.DISP.SITE-WEST

SUBS: ADM.AUX.SERV.

REMOVAL-THABON COMP: REF.REM.-OD & ALLANR.

CLEANSING OFFICER 2 ASST.CLEANSING OFFICER (F) 1 REF.DISPOS.SITE CARETAKER
4 OPERATOR

DE I

4 DRIVER GR. I

1 TYPIST/CLERK

